

# SITEDRAIN™ STRIP 6000

americanwick.com

## PREFABRICATED STRIP DRAINS

### PRODUCT OVERVIEW

SITEDRAIN Strip 6000 prefabricated soil drains are constructed by fully wrapping a perforated, high flow capacity polystyrene core with a nonwoven filter fabric. The filter fabric is bonded to the core and prevents soil intrusion into the flow channels while allowing water to freely enter the drain core from all sides.

SITEDRAIN Strip 6000 is a cost-effective, sustainable, performance driven alternative to perforated pipe & stone systems.



Typical Property Values	ASTM Test Method	Unit of Measure	Typical Values
<b>FABRIC</b>			
Material <sup>1</sup>			PP
Water Flow Rate	D 4491	gpm/ft <sup>2</sup>	150
		Lpm/m <sup>2</sup>	6,113
Grab Tensile Strength	D 4632	lbs	115
		N	512
CBR Puncture Resistance	D 6241	lbs	320
		kN	1.41
Apparent Opening Size	D 4751	sieve	70
		mm	0.21
Permittivity	D 4491	sec <sup>-1</sup>	2.2
Grab Elongation	D 4632	%	70
UV Resistance	D 4355	% / 500 Hrs	70
AASHTO M 288-06 <sup>2</sup>	Survivability	-	-
<b>CORE</b>			
Material <sup>1</sup>			HIPS
Thickness	D 1777	in	1.0
		mm	25.4
Compressive Strength	D 6364 D 1621	psf	6,000
		kPa	287
Flow Rate <sup>3</sup>	D 4716	gpm/ft	21
		Lpm/m	261

1 - PP = Polypropylene; HIPS = High Impact Polystyrene

2 - AASHTO Designation: M 288-06 Standard Specification for Highway Applications; American Association of State Highway and Transportation Officials, 2006. Geotextile survivability classification from installation stresses in subsurface drainage applications.

3 - In-plane flow rate measured at 3,600 psf (172 kPa) compressive load and a hydraulic gradient of 0.1.

All technical information contained in this document is accurate as of time of publishing. AWD reserves the right to make changes to products and literature without notice. Please refer to our website for the most current technical information available. Unless otherwise stated, all physical and performance properties listed are Typical Values as defined in ASTM D 4439.

1209 Airport Road, Monroe, NC 28110 USA

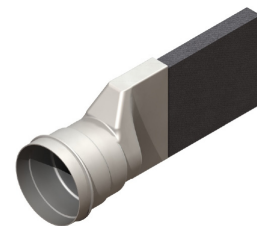
TF: +1.800.242.WICK • PH: +1.704.238.9200 Email: info@americanwick.com



MODEL	WIDTH	ROLL LENGTH
6006	6"	150'
6012	12"	150' or 500'
6018	18"	150' or 500'
6024	24"	150' or 500'
6036	36"	100'

### FITTINGS:

AWD has a full line of Fittings that transition collected water from Strip Drains to 4" pipe.



ESR-1107

American Wick Drain Corporation has received confirmation from ICC Evaluation Service, Inc., (ICC-ES), that its SITEDRAIN Strip Drain complies with the provisions of the International Building Code (IBC) and International Residential Code (IRC). This confirmation, as evidenced by ICC-ES #1107, provides guidance to code officials faced with approving the use of SITEDRAIN Strip Drain under these codes. The evaluation report is available online at [www.icc-es.org](http://www.icc-es.org).

Ph 800-452-4435  
Fax 615-822-9460  
info@jenhill.com  
www.jenhill.com

2016 SDST.6000