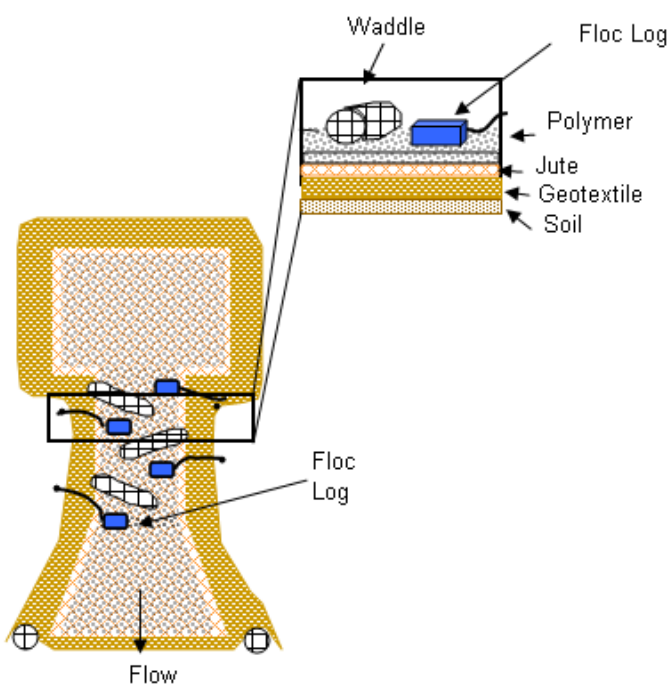


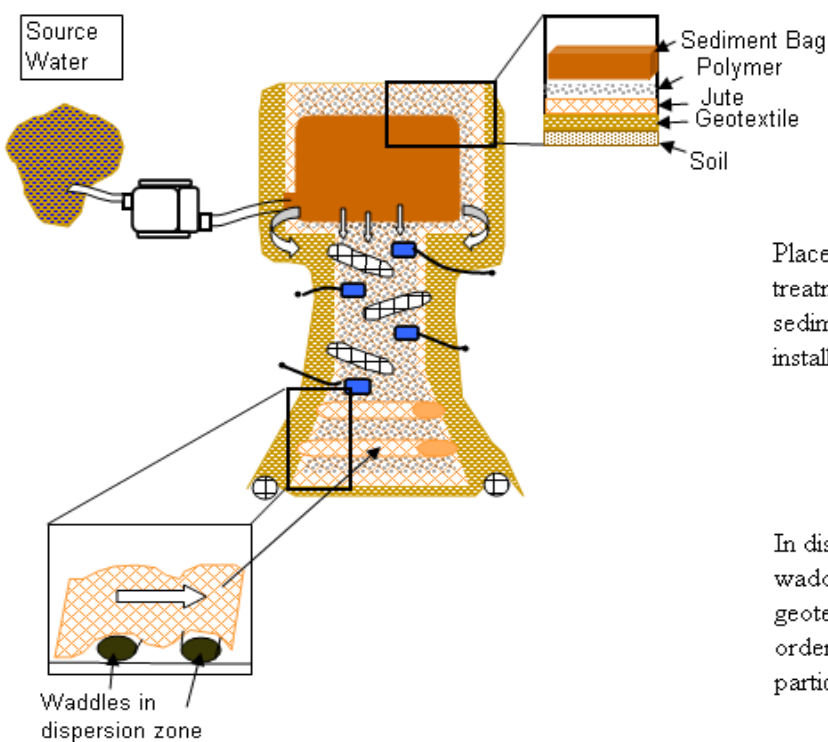
Dewatering Bag with Floc Logs

Dewatering bags are used to capture sediment that is in water being pumped from a sediment basin. The bag is excellent at controlling sediment being discharged during dewatering. However, fine particulate is allowed to leave the dewatering bag. By using a polymer enhanced dispersion field and Floc Logs **AFTER** the sediment bag the fine particulate can be flocculated out and captured allowing only clean water to leave the site.



Place Floc Logs before and after each waddle in the flow channel. Floc Log type should be determined by site specific soil and water tests.

They should be staked off and water should flow over and around the log to ensure maximum mixing and polymer dispersion.



Place sediment bag into treatment structure and follow sediment bag instructions for installation and pumping.

In dispersion zone, place waddles under either the geotextile or the jute matting in order to increase the area for particles to adhere to.