

General Advantages/Physical Attributes:

- ⊙ Effective for leak prevention and repair – both during and after initial construction
- ⊙ Composed of high-quality Wyoming sodium bentonite coated over a limestone aggregate core
- ⊙ Offers targeted delivery – solid core serves as an anchor, delivering the clay and holding it in place
- ⊙ Appropriate both before inundation and through standing water – often eliminating need to drain the basin
- ⊙ Consistently swells to form reliable, extremely low-permeable seal
- ⊙ Highly durable – heals if disturbed, withstands freeze/thaw cycles & re-hydrates an infinite number of times
- ⊙ Improves handling – dramatically minimizes dusting, dissipation, and product loss (sinks “like a stone”)
- ⊙ Structurally stable – due to internal matrix of individual stones
- ⊙ Aesthetically pleasing – blends with surrounding soils
- ⊙ Highly versatile & affordable

Versatility/Uses: (think of it as nature's duct tape!)

- ⊙ Blanket over permeable soils or other suspected problem areas
- ⊙ Easily backfill around pipes & control structures as a durable anti-seep – without the need for compaction
- ⊙ Create a cut-trench or vertical barrier wall to reinforce compromised dams or earthen berms
- ⊙ Use in ponds, lakes, reservoirs, canals, or anywhere that leaks can be a problem

Other Notables:

- ⊙ Reduces labor – no need for compaction in lifts or layers; no need to be tilled or mixed with parent soil
- ⊙ Erosion-resistant – can also be surface dressed with sand, soil, or stone for additional protection
- ⊙ Eco-friendly – will not adversely alter water chemistry
- ⊙ Available in two packaging options: 50-lb. bags and 2,400-lb. bulk bags (priced by ton)



Figure 1. PONDSEAL™ applied at 7-lbs./ft² five minutes after inundation (left) and 24 hours after inundation (right). Note original boundary between product and water (dashed red line) demonstrating swell/expansion of product over time.

PONDSEAL™

Stop the LeakSM

Due to its extreme low permeability, solid core structure, and ability to self-compact, **PONDSEAL** can be used in a wide array of circumstances, specifically as a means to prevent and/or repair common causes of water loss from ponds, lakes, and other waterways. Among its diverse applications, the bentonite-based “composite particle” can be used for: “blanket” linings to combat permeable soils, compromised basins, and/or preferential pathways – both through water [1 & 2] and prior to filling [3]; in cut-off wall

or trench installations [4] (to create a vertical barrier); and, to seal off problem spots such as remnant field tiles [5 & 6], excavations caused by burrowing animals, and around water control structures [7] – such as overflows, spillways, dams, and pipes.



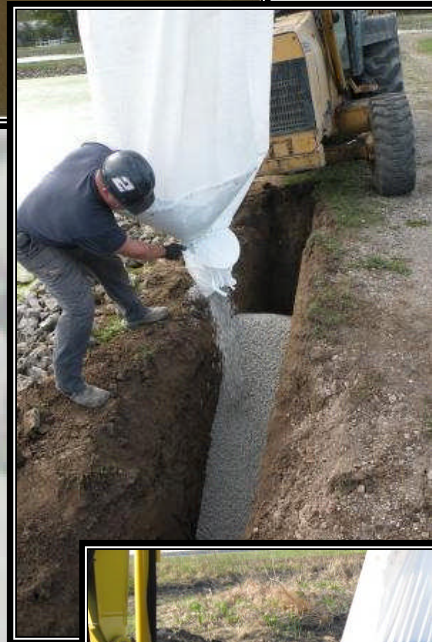
[1]



[2]



[3]



[4]



[5]



[6]



[7]

PONDSEAL is a patented product of AquaBlok, Ltd.
©2010 AquaBlok, Ltd. All rights reserved.
Rev. 1/01/10



800-452-4435
info@jenhill.com
www.jenhill.com

