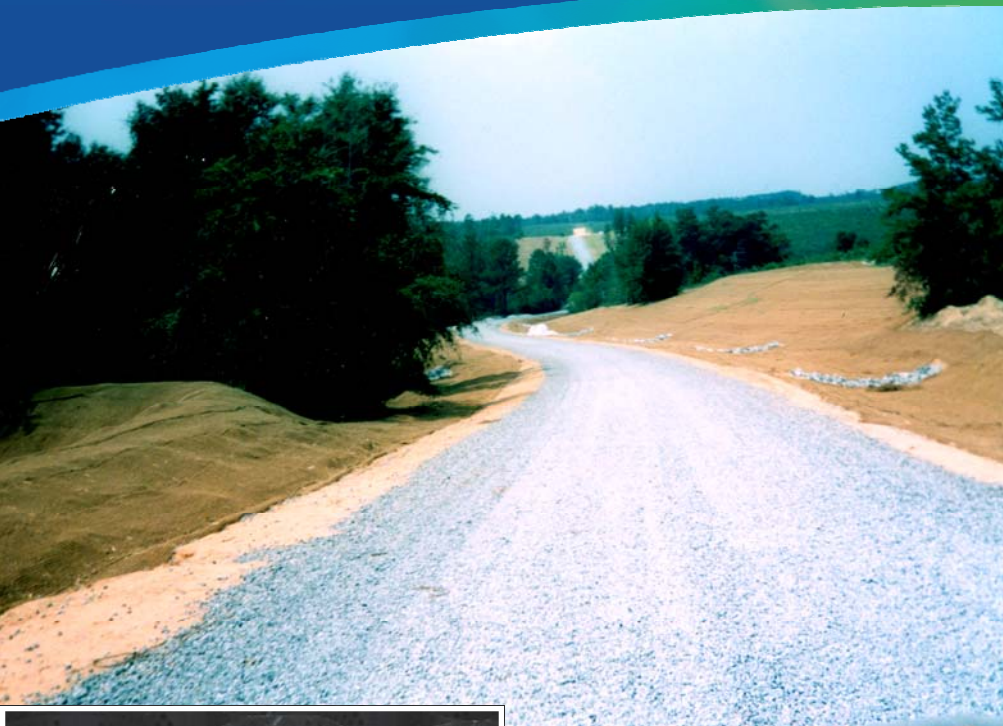


# PRESTO



## GEOWEB® PERMEABLE ROADWAY SYSTEM

### EGLIN AIR FORCE BASE, FL



**PROJECT LOCATION:** Eglin AFB, Florida

#### PROJECT SCOPE

The Presto Geosystems **Geoweb® Load Support System** provided a low-maintenance, permeable load-support roadway through the air force base grounds. The gravel-filled roadway, measuring 30 ft. wide and 4,000 ft. long, replaced a dirt road that had experienced significant sediment loss into a nearby creek from washout. The environmental impact of the increased sediment load endangered the protected fish species, the "Okaloosa Darter".

#### DESIGN CRITERIA

- Provide a permeable, stabilized surface to support base traffic loadings.
- Control surface rutting and storm water runoff.
- Comply with ecosystem management goals of their land management/natural resources .



#### GEOWEB® SYSTEM ENVIRONMENTAL BENEFITS

##### With aggregate infill, the Geoweb system:

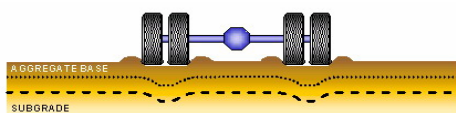
- Reduces storm water runoff, promoting groundwater replenishment.
- Functions as a natural storm water retention system, allowing water to fill the aggregate voids and permeate naturally into the existing ground.
- Reduces the heat-island effect.

##### Other Benefits:

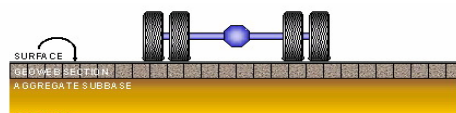
- Cell wall perforations facilitate lateral cell-to-cell drainage beneath traffic areas, resulting in better performance over saturated soils.
- Stability of the permeable pavement surface translates to a reduction in maintenance costs.

#### GEOWEB® LOAD SUPPORT SYSTEM STRUCTURAL BENEFITS

- Confines aggregates, preventing shear failure and both lateral and vertical movement of the infill material.
- Creates a stiff load distribution system, effectively reducing subgrade contact pressures and vertical deflections.
- Controls differential and total settlement over low-strength subgrades.
- Thickness and weight of confined vs. unconfined structural support systems may be reduced by 50 percent or more.



UNCONFINED GRANULAR PAVEMENT SYSTEM



THE GEOWEB GRANULAR PAVEMENT SYSTEM



**FOR MORE INFORMATION:** Presto Geosystems Ph: 800-548-3424; 920-738-1707 [www.prestogeo.com](http://www.prestogeo.com)  
Florida Representative: RH Moore & Associates Ph: 800-330-2333 [www.rhmooreassociates.com](http://www.rhmooreassociates.com)

*creating sustainable environments*